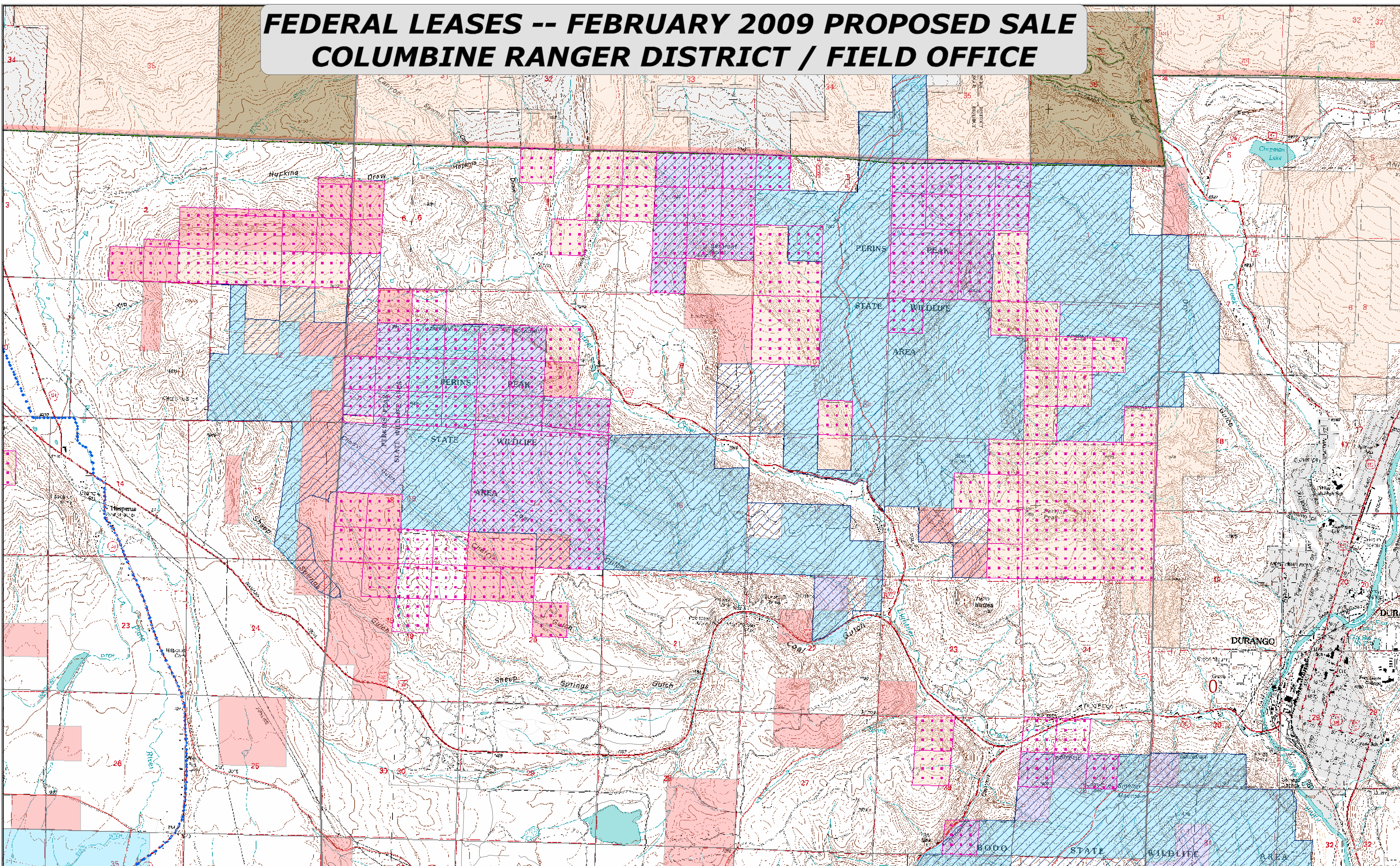


# FEDERAL LEASES -- FEBRUARY 2009 PROPOSED SALE COLUMBINE RANGER DISTRICT / FIELD OFFICE



**Surface Ownership / Mineral Ownership**

<span style="display: inline-block; width: 15px; height: 10px; background-color: #f4a460; border: 1px solid black;"></span> Federal Surface   Federal Mineral
<span style="display: inline-block; width: 15px; height: 10px; background-color: #808000; border: 1px solid black;"></span> Federal Surface   Private Mineral
<span style="display: inline-block; width: 15px; height: 10px; background-color: #ffffff; border: 1px solid black;"></span> Private Surface   Private Mineral
<span style="display: inline-block; width: 15px; height: 10px; background-color: #ff6347; border: 1px solid black;"></span> Private Surface   Federal Mineral
<span style="display: inline-block; width: 15px; height: 10px; background-color: #00b0f0; border: 1px solid black;"></span> State Surface   State Mineral
<span style="display: inline-block; width: 15px; height: 10px; background-color: #9370db; border: 1px solid black;"></span> State Surface   Federal Mineral
<span style="display: inline-block; width: 15px; height: 10px; background-color: #90ee90; border: 1px solid black;"></span> Tribal Surface   Tribal Mineral
<span style="display: inline-block; width: 15px; height: 10px; background-color: #ff69b4; border: 1px solid black;"></span> Tribal Surface   Federal Mineral

**Legend - Land Status**

<span style="display: inline-block; width: 15px; border-bottom: 2px solid blue;"></span> County Boundary
<span style="display: inline-block; width: 15px; border-bottom: 2px solid green;"></span> San Juan National Forest Boundary
<span style="display: inline-block; width: 15px; height: 10px; background-color: #fff9c4; border: 1px dashed black;"></span> Feb 2009 Lease Sale DNA
<span style="display: inline-block; width: 15px; height: 10px; background-color: #e0e0e0; border: 1px solid black;"></span> Colorado State Wildlife Areas

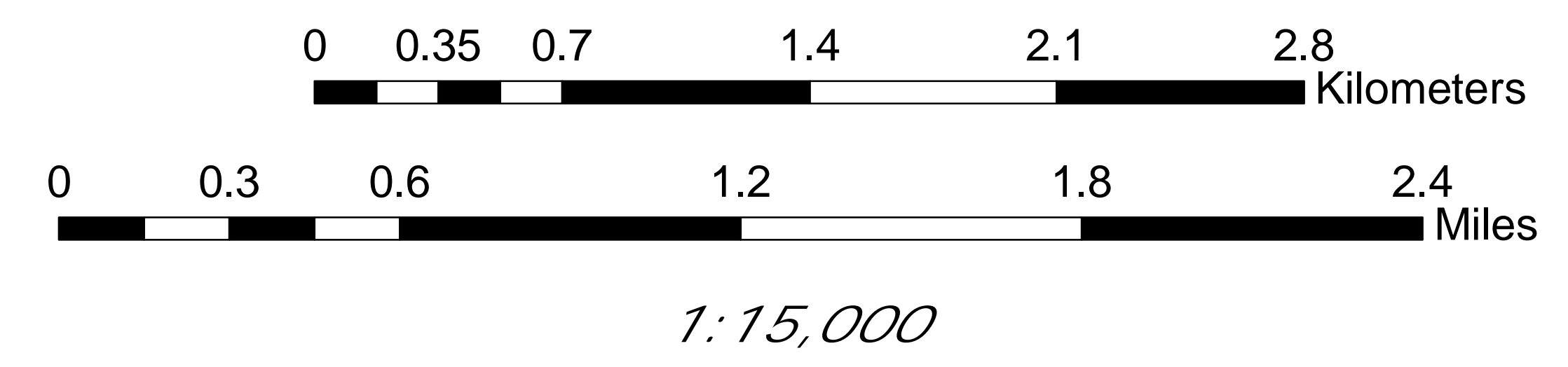
**San Juan Public Lands Offices**

<span style="display: inline-block; width: 10px; height: 10px; border: 1px solid red; border-radius: 50%;"></span> SUPERVISORS OFFICE
<span style="display: inline-block; width: 10px; height: 10px; border: 1px solid blue; border-radius: 50%;"></span> DISTRICT OFFICE

**Existing Roads**

<span style="display: inline-block; width: 15px; border-bottom: 2px solid red;"></span> Highway
<span style="display: inline-block; width: 15px; border-bottom: 1px solid black;"></span> Primary Road
<span style="display: inline-block; width: 15px; border-bottom: 1px solid black;"></span> Local Constant - Open
<span style="display: inline-block; width: 15px; border-bottom: 1px solid black;"></span> Local Intermittent - Closed
<span style="display: inline-block; width: 15px; border-bottom: 1px solid black;"></span> Secondary Road
<span style="display: inline-block; width: 15px; border-bottom: 1px dashed black;"></span> Trail
<span style="display: inline-block; width: 15px; border-bottom: 1px dotted black;"></span> Trail Open to Motorized Use

*Transverse Mercator Projection  
 1983 North American Datum  
 Zone 13*



**DISCLAIMER:** GIS data and product accuracy may vary. The San Juan Public Lands Center reserves the right to correct, update, modify, or replace GIS products without notification. For more information, contact: San Juan Public Lands, 15 Burnett Ct., Durango, CO. RMB-11/07/2008